



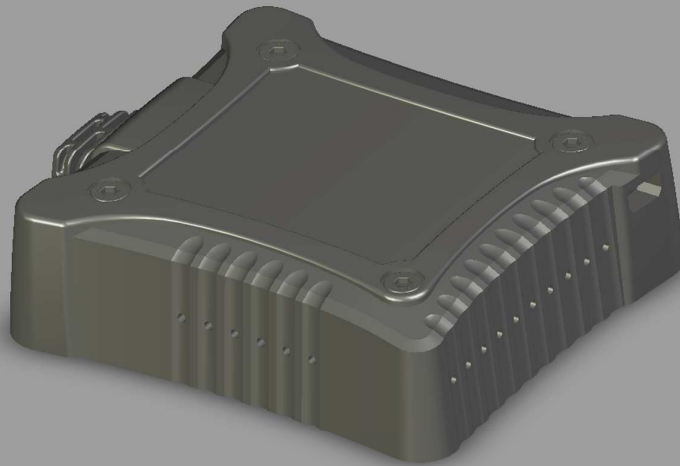
**Pk-Power Dragon
Documentation & Installation
BMW S1000RR 2010-2011**

Version 1.1

PK-POWER

Warning !!!

This product is intended to be used only on racing vehicles on closed courses. It is not for use on vehicles subject to emission control requirements or on any vehicle that is registered or licensed for use on public roads



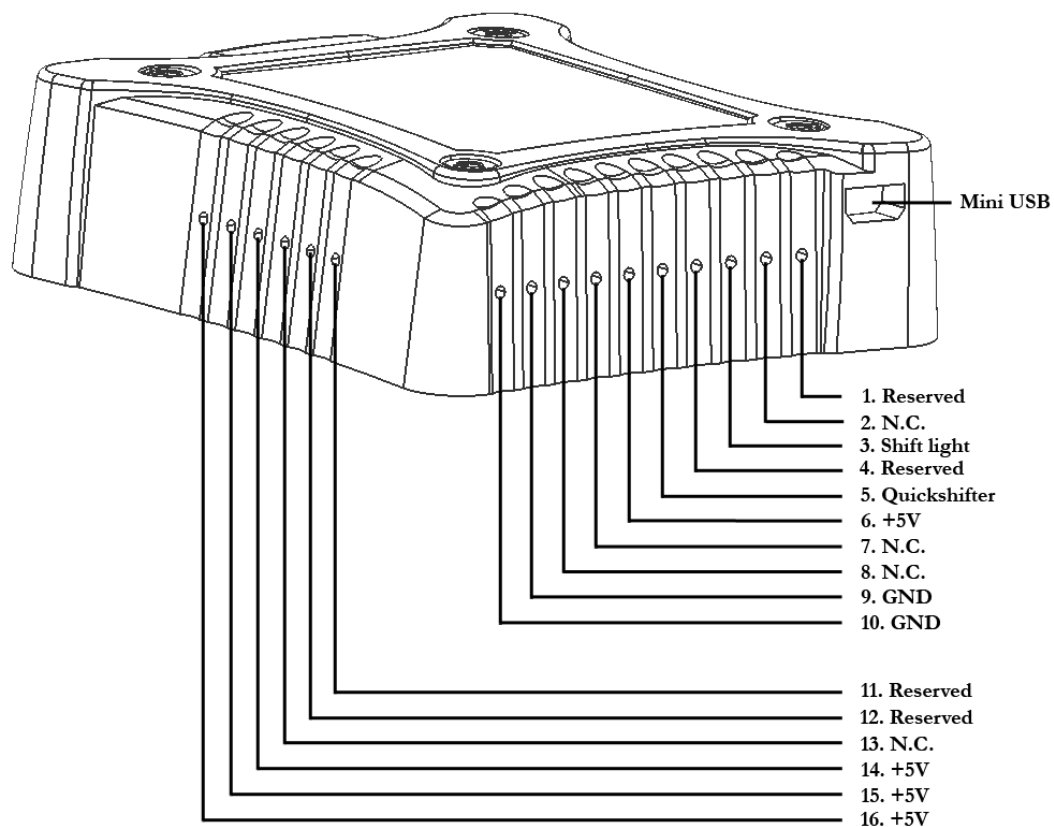
Part list

1. Pk-Power Dragon
2. USB Mini Cable
3. CD-Rom
4. Velcro ® Strip

Please read these instructions carefully before starting installation

1 Accessory Inputs

On the bottom side of the Pk-Power Dragon device a screw for each input is situated. Initially loose the selected screw, insert the wire into the corresponding input and subsequently tighten the screw.



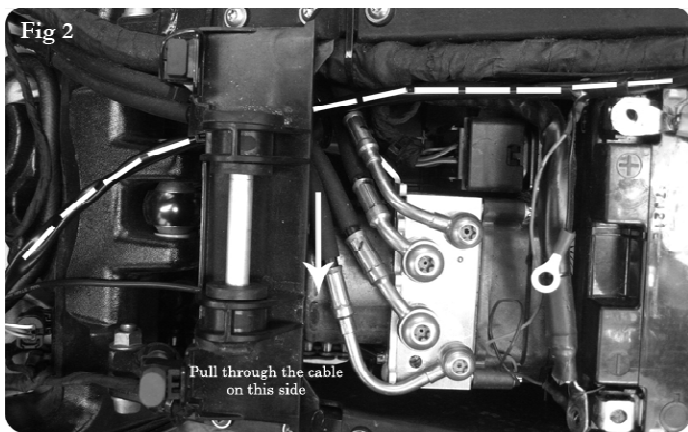
1. **Reserved**– Reserved for future use
2. **N.C.** – not connected
3. **Shift Light** – any shift light may be inserted into this input. Connect the negative pole of the shift light to this input. The positive pole of the shift light must be connected to the +12V battery terminal.



4. **Reserved**– Reserved for future use
5. **Quickshifter** – The Pk-Power Quickshifter may be inserted into this input. The Pk-Power Quickshifter disposes of two wires. Run any wire into this input. The second wire must be inserted into GND of the Pk-Power Dragon Device (Input 9 or 10). The polarity is thereby of no significance.
6. **+5V** – Do NOT connect anything to this input unless instructed to do so by the Pk-Power directions.
7. **N.C.** – not connected
8. **N.C.** – not connected
9. **GND** – Do NOT connect anything to this input unless instructed to do so by the Pk-Power directions.
10. **GND** – Do NOT connect anything to this input unless instructed to do so by the Pk-Power directions.
11. **Reserved**– Reserved for future use
12. **Reserved**– Reserved for future use
13. **N.C.** – not connected
14. **+5V** – Do NOT connect anything to this input unless instructed to do so by the Pk-Power directions.
15. **+5V** – Do NOT connect anything to this input unless instructed to do so by the Pk-Power directions.
16. **+5V** – Do NOT connect anything to this input unless instructed to do so by the Pk-Power directions.

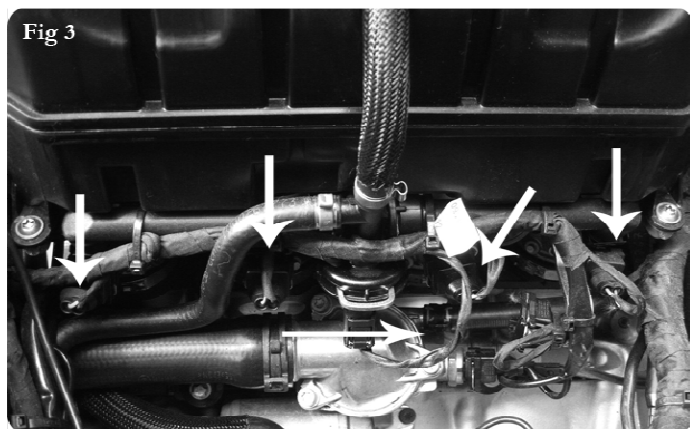
2 Installation

The following sections describe the installation of the Pk-Power Dragon device. **Please make sure the ignition is turned off before installation.**



1. Remove both seats.
2. Remove the fuel tank cover and the entire tank.
3. Lay the Pk-Power Dragon device in the tail section and route the Pk-Power Dragon wiring harness underneath the bodywork on the **left** side of the bike.
4. Route the Pk-Power wiring harness on the **LEFT** side of the bike underneath the tank bracket as shown in Fig. 2 (in Fig. 2, the wiring harness is located on the **RIGHT** side of the bike!).

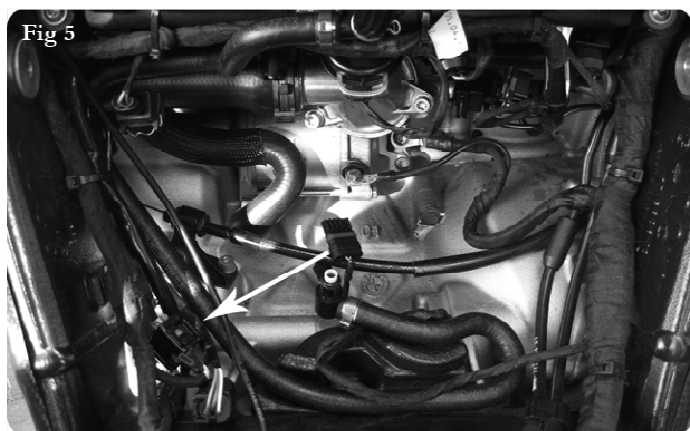
PK-POWER



5. Unplug the connectors from the injectors as marked in Fig. 3.

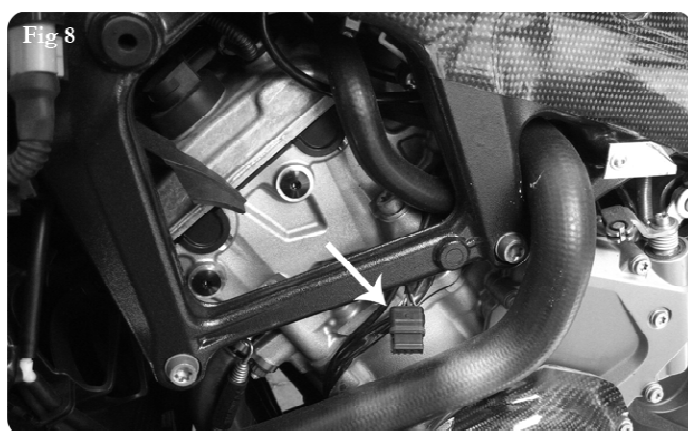
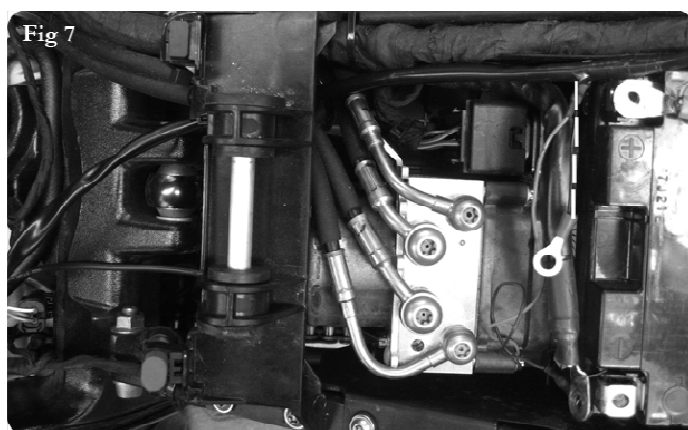
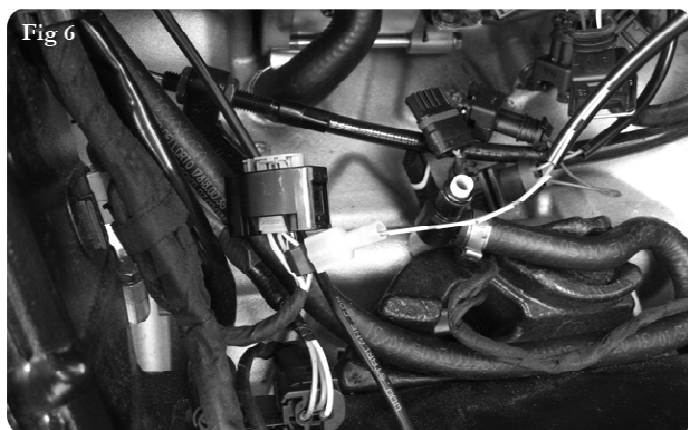


6. Attach the connectors of the Pk-Power Dragon wiring harness to the injectors and the vehicle connectors as shown in Fig. 4. Make sure the connector of the Pk-Power Dragon is attached to the **left** injector using the **yellow** wire. (As marked with No. 1 in Fig. 4.)



7. On the **LEFT** side of the bike (see the arrow in Fig. 5) you find the connector with the throttle position wire

PK-POWER



8. Unplug the connector of the throttle position and attach the connector using the wire tap provided with the Pk-Power Dragon to the **white/grey** wire. Fix the connector on the **grey** wire of the Pk-Power Dragon wiring harness to the wire tap up to the stop collar, as shown in Fig. 6.

9. Attach the black wire of the Pk-Power Dragon harness to the negative side of the battery.

10. Locate the O2 sensor connector on the left side of the bike (as marked with an arrow in Fig. 8). Unplug the connector.

11. Locate the O2 sensor connector on the right side of the bike as well and unplug the connector.

12. Reinstall the fuel tank, entire bodywork and seats.

3 Calibration

After installing the Pk-Power Dragon device on your bike, the throttle position must be calibrated. In order to perform this calibration, an installation of the the Pk-Power Dragon Software – **PkPowerDragon.exe** on your PC is required beforehand. Read the relevant software documentation **PkPowerDragonSoftwareDoc_EN.pdf** as well.

3.1 Throttle Position Calibration

1. Connect the Pk-Power Dragon device to your PC through the USB Mini Cable provided.
2. Run the Pk-Power Dragon Software on your PC
3. Start the engine
4. Click the TP Button
5. A new window with two slide controls opens (Fig 3.1)
6. When the engine is **running**, shortly apply **idle throttle** and shortly **full throttle** afterwards
7. Click the **Save** button to apply the settings.

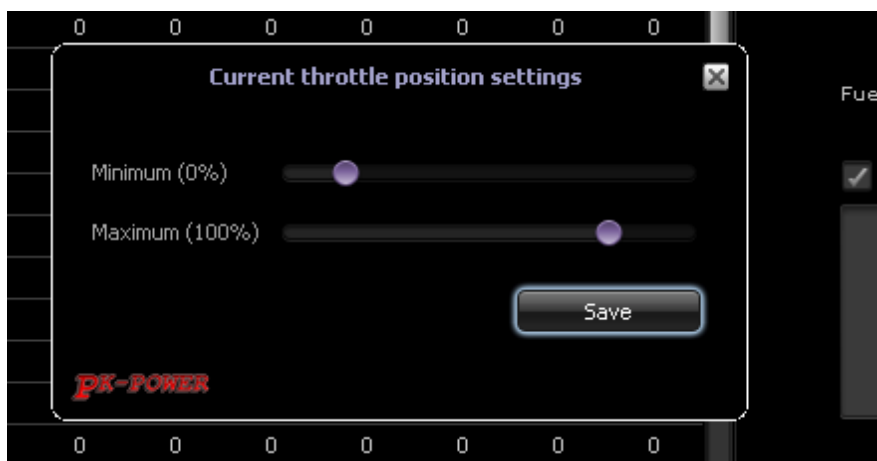


Fig 3.1